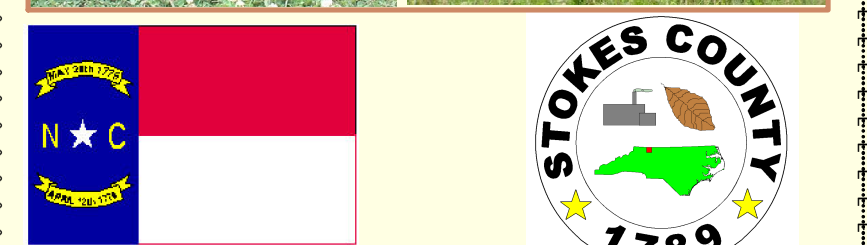


STOKES COUNTY VOLUNTARY AGRICULTURAL DISTRICTS

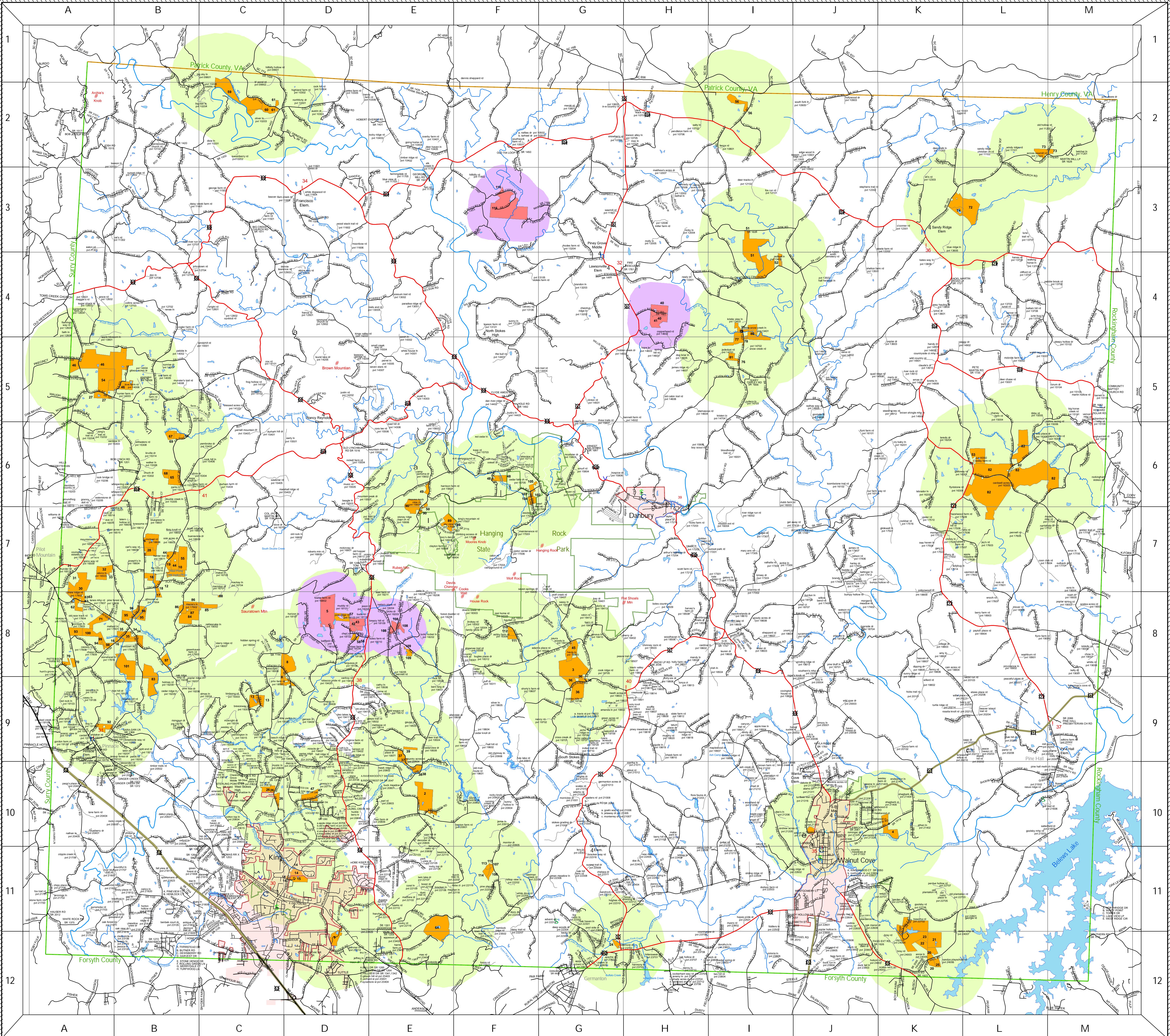
MAP OF STOKES COUNTY VOLUNTARY AGRICULTURAL DISTRICTS



STOKES COUNTY GIS/MAPPING DEPARTMENT
DISCLAIMER
 This map was prepared using the most reliable sources from government and private industry sources. There are no guarantees (explicit or implied) regarding the map by the Stokes County GIS/Mapping Department. Furthermore, the Stokes County Mapping Department shall not be held responsible for any errors, omissions, or changes arising from the use or misuse of this map. Any and all errors brought to our attention will be corrected in later revisions.

PARCEL INDEX

PARCEL ID	OWNER	TYPE OF VAD	PARCEL ID	OWNER	TYPE OF VAD
001-001-001	JOHN SMITH	AG	001-001-002	JANE DOE	AG
001-001-003	JOHN SMITH	AG	001-001-004	JANE DOE	AG
001-001-005	JOHN SMITH	AG	001-001-006	JANE DOE	AG
001-001-007	JOHN SMITH	AG	001-001-008	JANE DOE	AG
001-001-009	JOHN SMITH	AG	001-001-010	JANE DOE	AG
001-001-011	JOHN SMITH	AG	001-001-012	JANE DOE	AG
001-001-013	JOHN SMITH	AG	001-001-014	JANE DOE	AG
001-001-015	JOHN SMITH	AG	001-001-016	JANE DOE	AG
001-001-017	JOHN SMITH	AG	001-001-018	JANE DOE	AG
001-001-019	JOHN SMITH	AG	001-001-020	JANE DOE	AG
001-001-021	JOHN SMITH	AG	001-001-022	JANE DOE	AG
001-001-023	JOHN SMITH	AG	001-001-024	JANE DOE	AG
001-001-025	JOHN SMITH	AG	001-001-026	JANE DOE	AG
001-001-027	JOHN SMITH	AG	001-001-028	JANE DOE	AG
001-001-029	JOHN SMITH	AG	001-001-030	JANE DOE	AG
001-001-031	JOHN SMITH	AG	001-001-032	JANE DOE	AG
001-001-033	JOHN SMITH	AG	001-001-034	JANE DOE	AG
001-001-035	JOHN SMITH	AG	001-001-036	JANE DOE	AG
001-001-037	JOHN SMITH	AG	001-001-038	JANE DOE	AG
001-001-039	JOHN SMITH	AG	001-001-040	JANE DOE	AG
001-001-041	JOHN SMITH	AG	001-001-042	JANE DOE	AG
001-001-043	JOHN SMITH	AG	001-001-044	JANE DOE	AG
001-001-045	JOHN SMITH	AG	001-001-046	JANE DOE	AG
001-001-047	JOHN SMITH	AG	001-001-048	JANE DOE	AG
001-001-049	JOHN SMITH	AG	001-001-050	JANE DOE	AG
001-001-051	JOHN SMITH	AG	001-001-052	JANE DOE	AG
001-001-053	JOHN SMITH	AG	001-001-054	JANE DOE	AG
001-001-055	JOHN SMITH	AG	001-001-056	JANE DOE	AG
001-001-057	JOHN SMITH	AG	001-001-058	JANE DOE	AG
001-001-059	JOHN SMITH	AG	001-001-060	JANE DOE	AG
001-001-061	JOHN SMITH	AG	001-001-062	JANE DOE	AG
001-001-063	JOHN SMITH	AG	001-001-064	JANE DOE	AG
001-001-065	JOHN SMITH	AG	001-001-066	JANE DOE	AG
001-001-067	JOHN SMITH	AG	001-001-068	JANE DOE	AG
001-001-069	JOHN SMITH	AG	001-001-070	JANE DOE	AG
001-001-071	JOHN SMITH	AG	001-001-072	JANE DOE	AG
001-001-073	JOHN SMITH	AG	001-001-074	JANE DOE	AG
001-001-075	JOHN SMITH	AG	001-001-076	JANE DOE	AG
001-001-077	JOHN SMITH	AG	001-001-078	JANE DOE	AG
001-001-079	JOHN SMITH	AG	001-001-080	JANE DOE	AG
001-001-081	JOHN SMITH	AG	001-001-082	JANE DOE	AG
001-001-083	JOHN SMITH	AG	001-001-084	JANE DOE	AG
001-001-085	JOHN SMITH	AG	001-001-086	JANE DOE	AG
001-001-087	JOHN SMITH	AG	001-001-088	JANE DOE	AG
001-001-089	JOHN SMITH	AG	001-001-090	JANE DOE	AG
001-001-091	JOHN SMITH	AG	001-001-092	JANE DOE	AG
001-001-093	JOHN SMITH	AG	001-001-094	JANE DOE	AG
001-001-095	JOHN SMITH	AG	001-001-096	JANE DOE	AG
001-001-097	JOHN SMITH	AG	001-001-098	JANE DOE	AG
001-001-099	JOHN SMITH	AG	001-001-100	JANE DOE	AG



Map of the Cities and Road Index on Back

Legend

AIRPORT	POST OFFICE
CAMP	RIVER
EMS	SCHOOL
FIREHOUSE	STATE ROAD
GOLF	PRIVATE DRIVE
GOVT	NC HWY
HOSPITAL	US HWY
INTEREST	CITY LINE
LIBRARY	COUNTY LINE
MOURISAN	STATE LINE
POLICE	PARK
	CITY LIMITS

Voluntary Agricultural District Parcel (Orange outline)

VAD- Confined Animal Operations Parcel (Red outline)

Voluntary Agricultural District Buffer 1 Mi. (Light Green fill)

VAD- Confined Animal Operations Buffer 1/2 Mi. (Light Purple fill)

Voluntary Agricultural Districts of Stokes County, North Carolina Displayed in the Orange are the Voluntary Agricultural Districts. These Districts in Orange have a One Mile Buffer in Green that is Based on the Parcel Perimeter from GIS Calculations. Displayed in Red are the Confined Animal Operations. These Districts in Red have a Half-Mile Buffer in Violet which are also based from the Parcel Perimeter from GIS Calculations.

This Map is Certified By the Chairman of The Stokes Agricultural Advisory Board

Chairman _____
 Date _____

July 2007
 For a copy of the Stokes County Voluntary Farmland Preservation Program Ordinance, Contact Stokes Soil -Water Conservation District Office @ 336 593-2846 or Stokes Cooperative Extension Office @ 336 593-9179 or Go Online to www.stokeswcd.org